

Fast hack – Synapse Dedicated Pool Performance Tables relationships

Contents

Document History.....	3
Available tables and relations.....	4

Document History

Document Revision History Table				
Version No.	Effective Date of Change/ Correction	Summary of Change	Author, Date	Reviewer, Date
01			Luca, March 15, 2022	

- Revisions noted above will be documented throughout the Document and are effective per the dates indicated in the table.

Available tables and relations

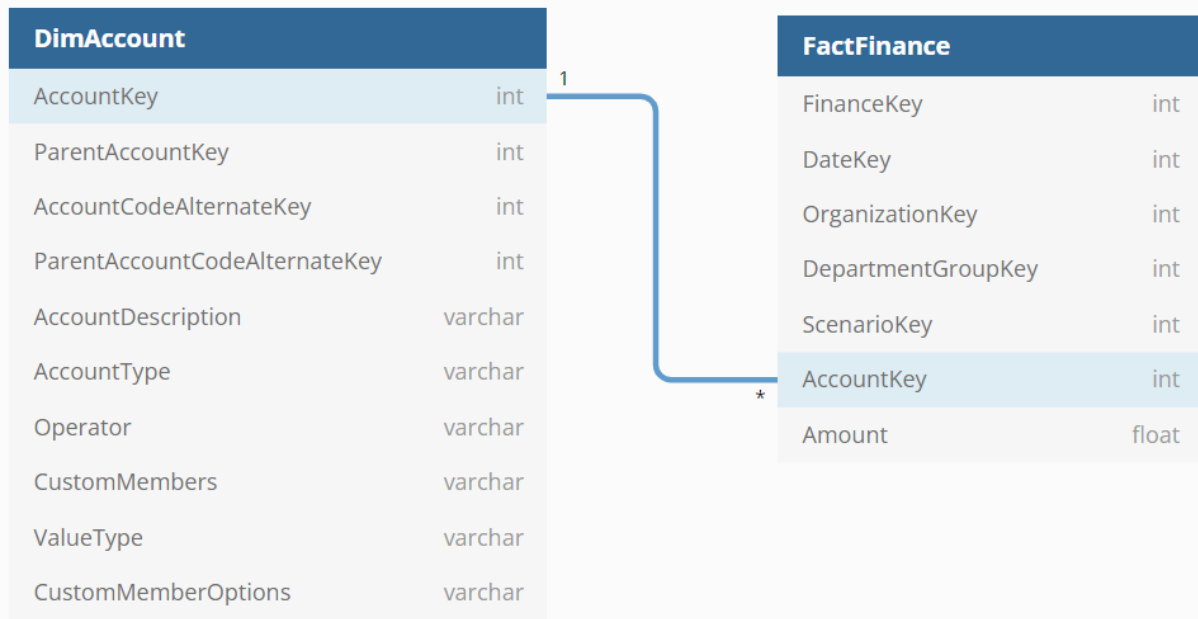
Table Name	Description
DimAccount	Contains all accounts and their attributes
DimCurrency	Contains all defined currencies
DimCustomer	Contains all customers and their attributes
DimDate	Contains all dates and attributes like quarter, semester etc
DimDepartmentGroup	Contains all departments
DimEmployee	Contains all Employees and their attributes
DimGeography	Contains all Geographys and their attributes
DimOrganization	Contains all Company's organizations and attributes
DimProduct	Contains all products with validity interval defined by StartDate and EndDate
DimProductCategory	Contains all product categories
DimProductSubcategory	Containst all product Sub-categories
DimPromotion	Contains all promotions with validity interval defined by StartDate and EndDate
DimReseller	Cantains all resellers and their attributes
DimSalesReason	Contains all valid Sale Reasons
DimSalesTerritory	Contains all territories and attributes
DimScenario	Contains all scenarios
FactCurrencyRate	For each currency contains the avg rate and final rate day starting from 2001-07-01
FactFinance	Contains aggregated info about financial data day by day starting from 2001-07-01
FactInternetSales	Contains all Internet sales day by day starting from 2001-07-01
FactInternetSalesReason	Contains Internet sales reasons for each sale in FactInternetSale
FactResellerSales	Contains all Resellers sales day by day starting from 2001-07-01 'till the day you ran the script to create it
FactSales	Contains basic info abut sales day by day starting from 2001-07-01

Tables – Relations

A: Dimension tables - Dependencies:

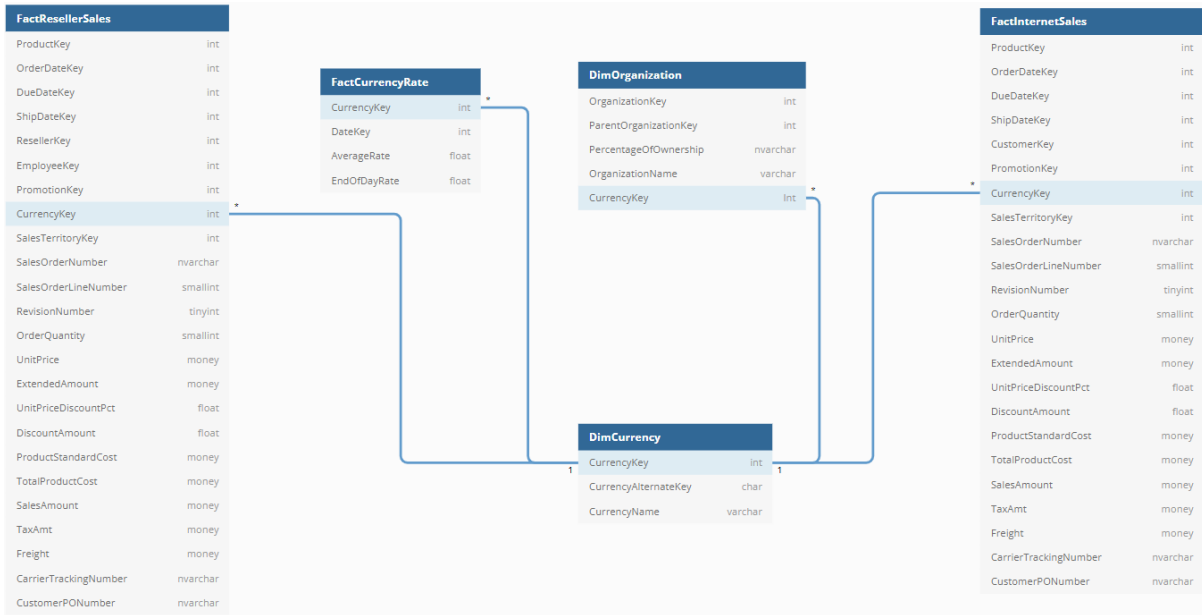
DimAccount

table_name	column_name	data_type
DimAccount	AccountKey	int
FactFinance	AccountKey	int



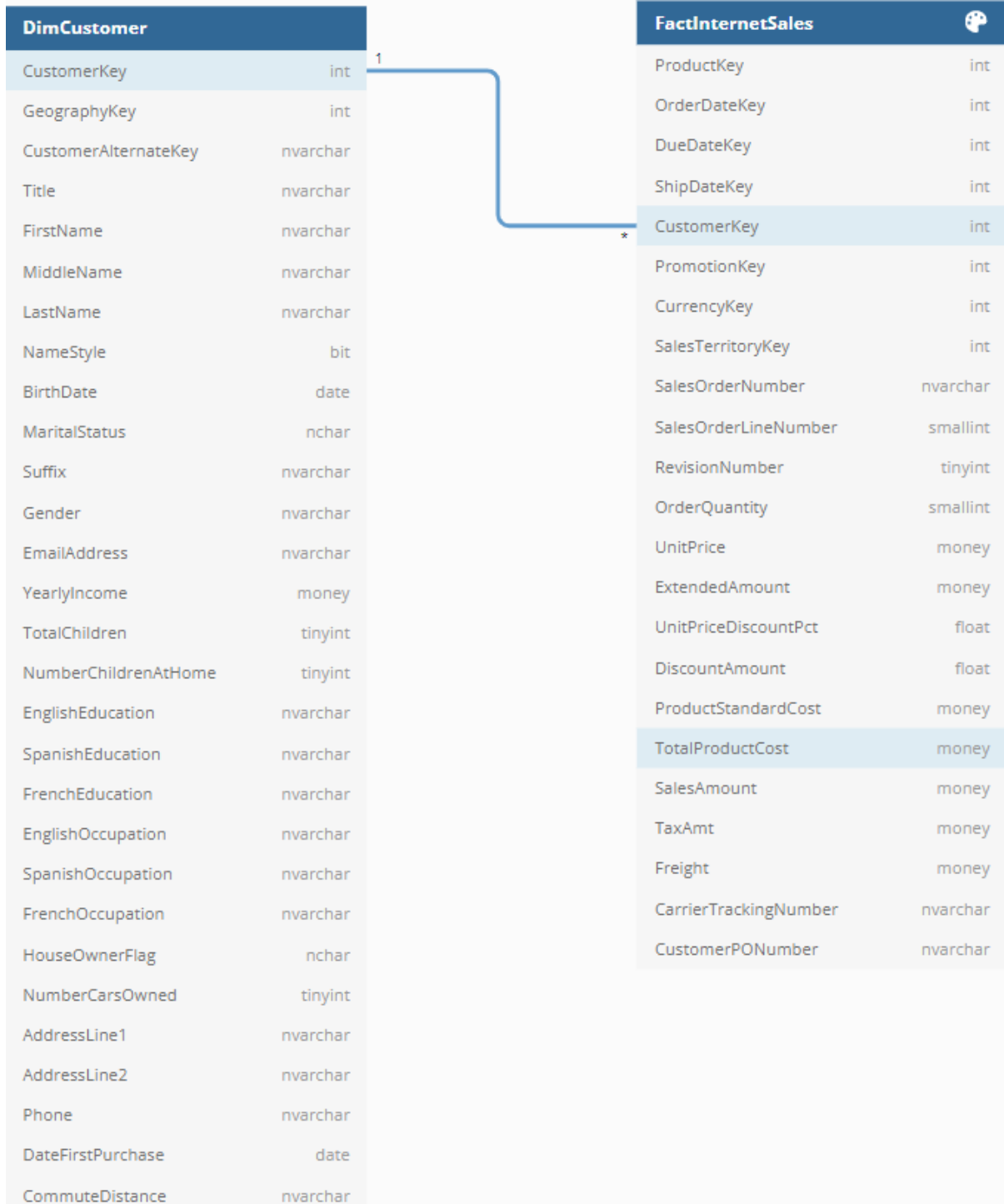
DimCurrency

table_name	column_name	data_type
FactCurrencyRate	CurrencyKey	int
FactInternetSales	CurrencyKey	int
FactResellerSales	CurrencyKey	int
DimCurrency	CurrencyKey	int
DimOrganization	CurrencyKey	int
FactSales	CurrencyKey	int



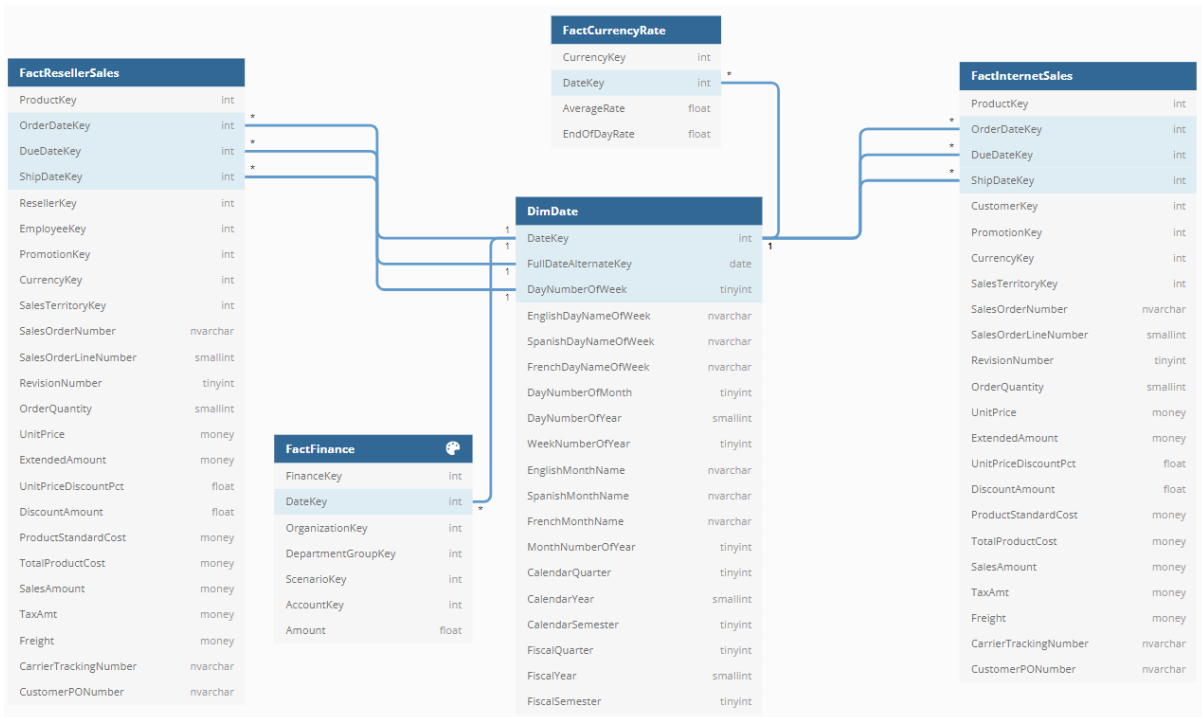
DimCustomer

table_name	column_name	data_type
DimCustomer	CustomerKey	int
FactInternetSales	CustomerKey	int
FactSales	CustomerKey	int



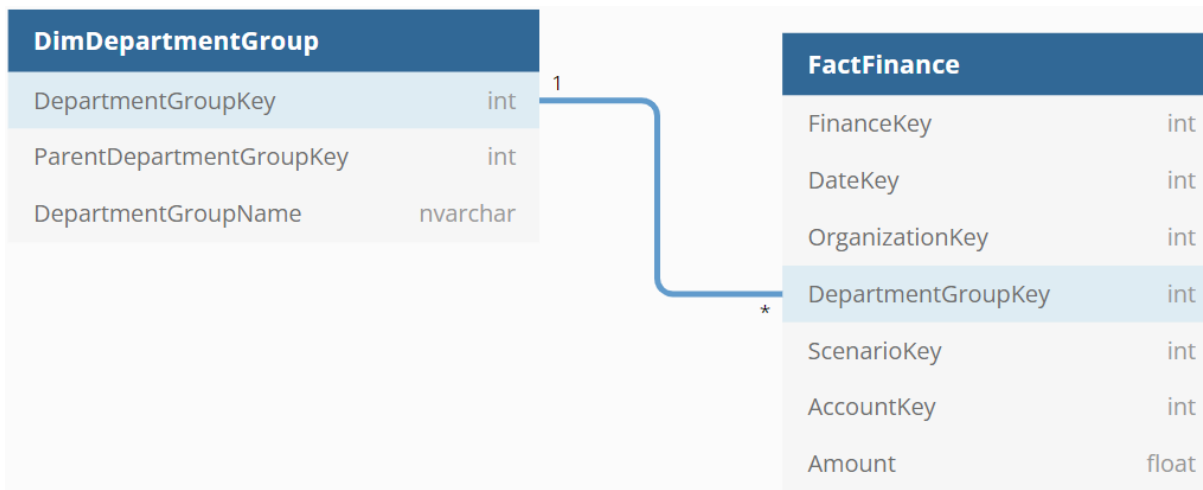
DimDate

table_name	column_name	data_type
DimDate	DateKey	int
FactCurrencyRate	DateKey	int
FactFinance	DateKey	int
FactInternetSales	OrderDateKey	int
FactInternetSales	DueDateKey	int
FactInternetSales	ShipDateKey	int
FactResellerSales	OrderDateKey	int
FactResellerSales	DueDateKey	int
FactResellerSales	ShipDateKey	int
FactSales	OrderDateKey	int



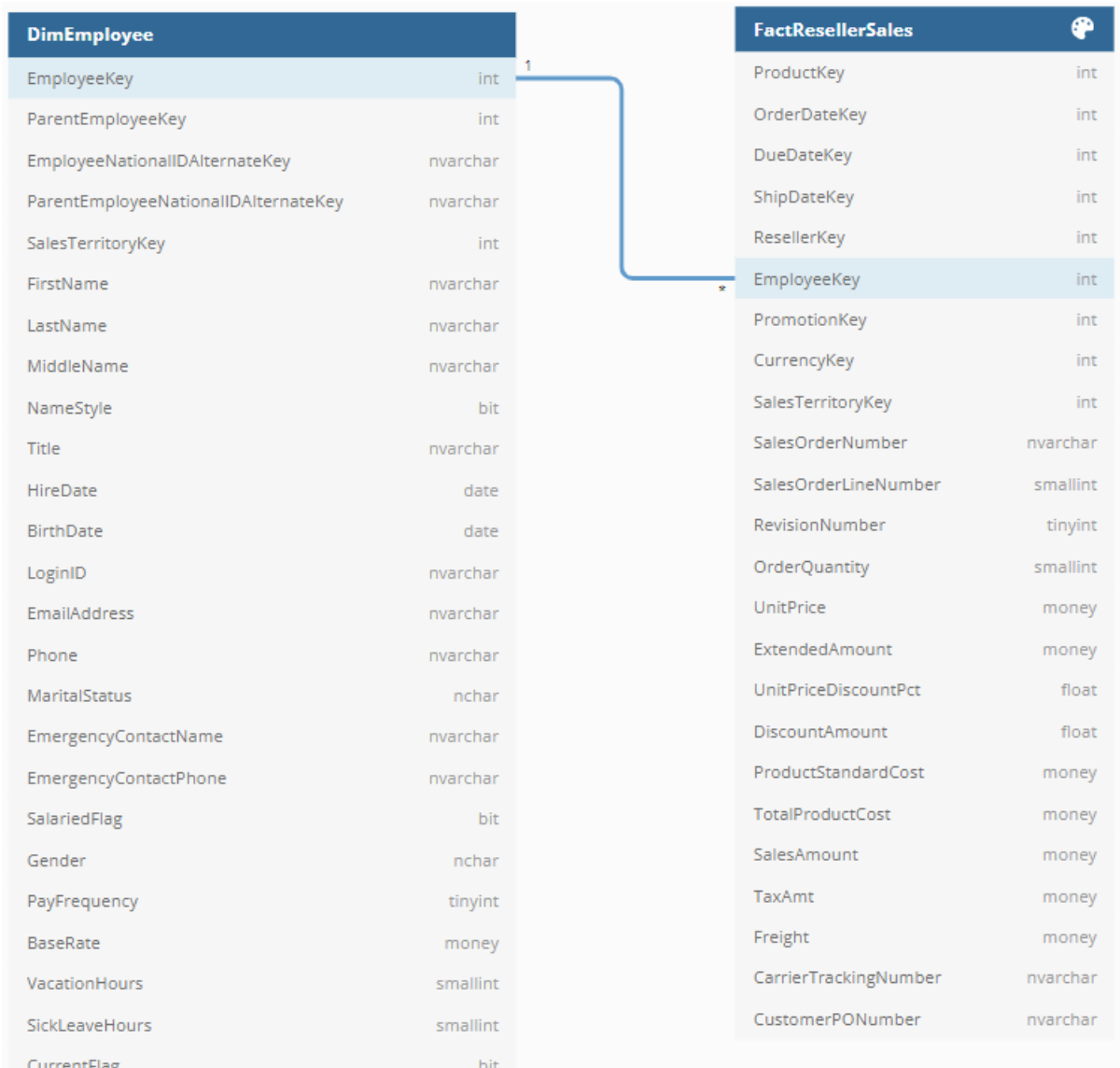
DimDepartmentGroup

table_name	column_name	data_type
FactFinance	DepartmentGroupKey	int
DimDepartmentGroup	DepartmentGroupKey	int



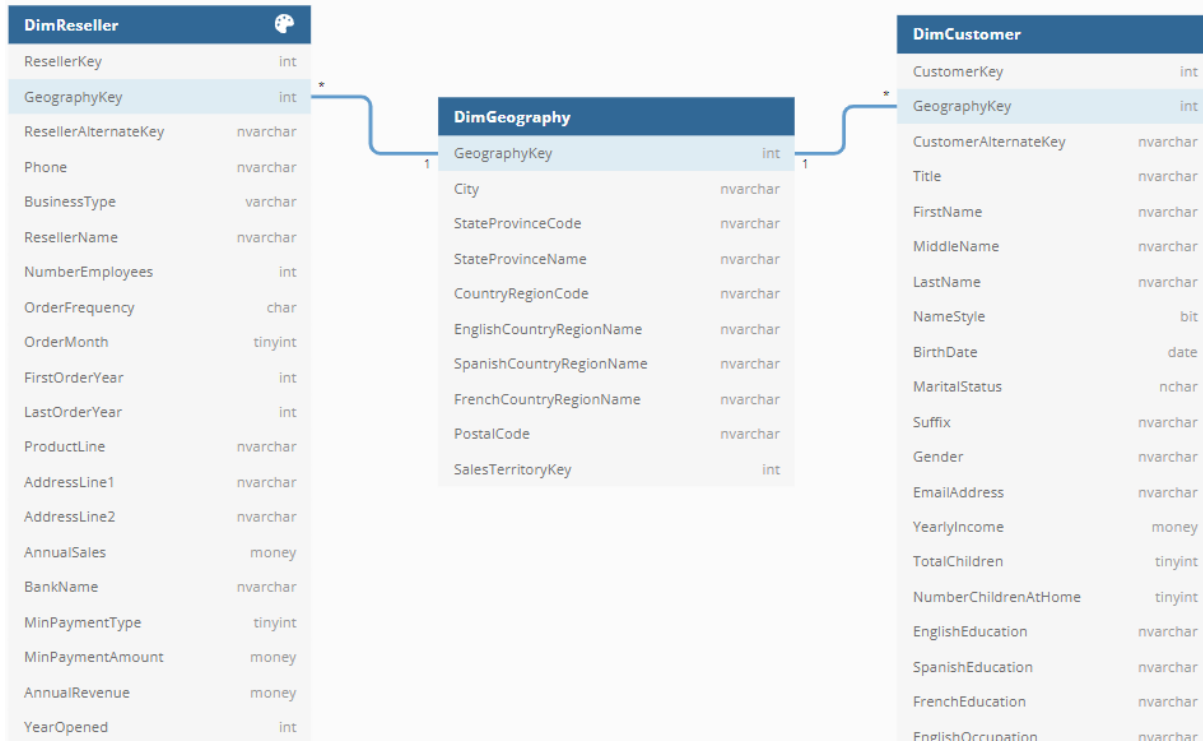
DimEmployee

FactSalesQuota	EmployeeKey	int
FactResellerSales	EmployeeKey	int
DimEmployee	EmployeeKey	int



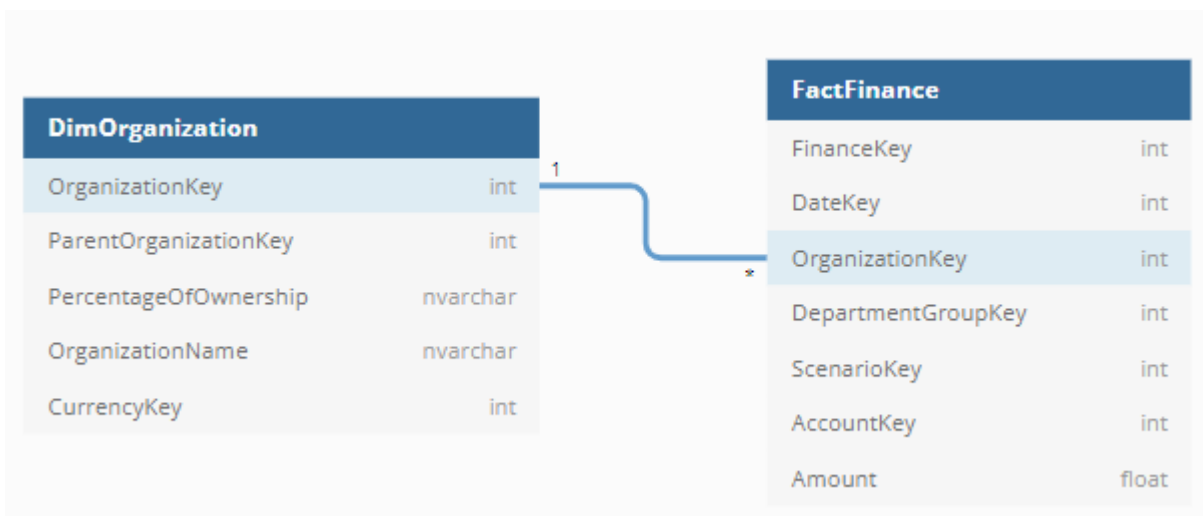
DimGeography

table_name	column_name	data_type
DimCustomer	GeographyKey	int
DimReseller	GeographyKey	int
DimGeography	GeographyKey	int



DimOrganization

table_name	column_name	data_type
FactFinance	OrganizationKey	int
DimOrganization	OrganizationKey	int



Fast hack - Synapse Dedicated Sql Pool – Tables relationships

Author: Luca Ferrari

Last Update: 3/15/2022

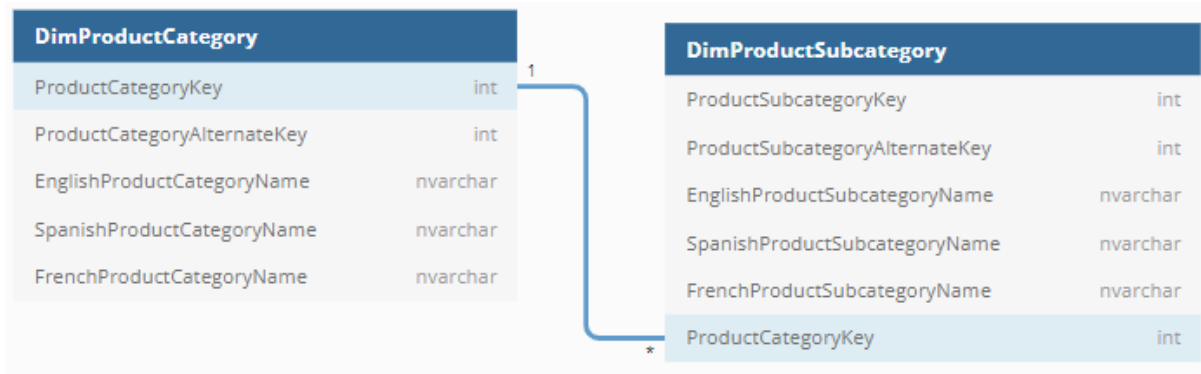
DimProduct

DimProduct	ProductKey	int
FactInternetSales	ProductKey	int
FactResellerSales	ProductKey	int
FactSales	ProductKey	int



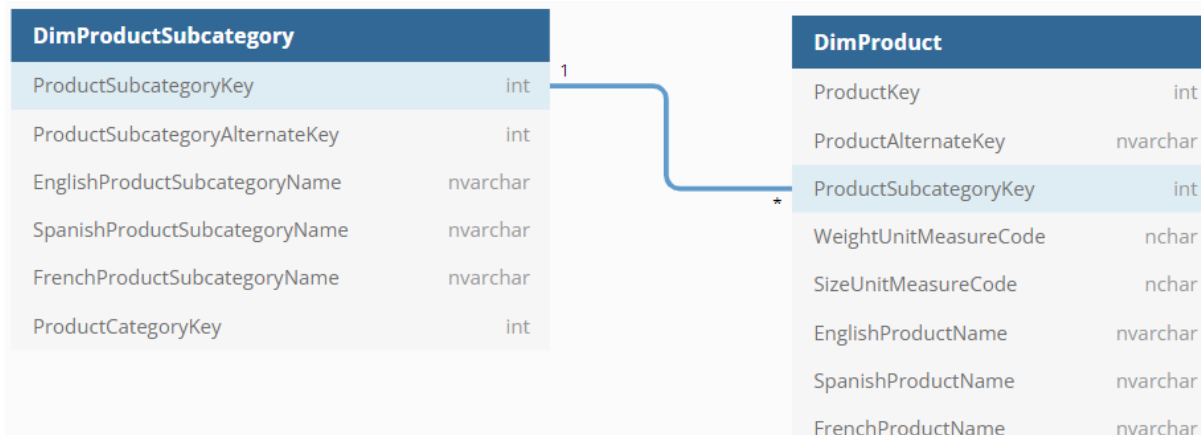
DimProductCategory

table_name	column_name	data_type
DimProductCategory	ProductCategoryKey	int
DimProductSubcategory	ProductCategoryKey	int



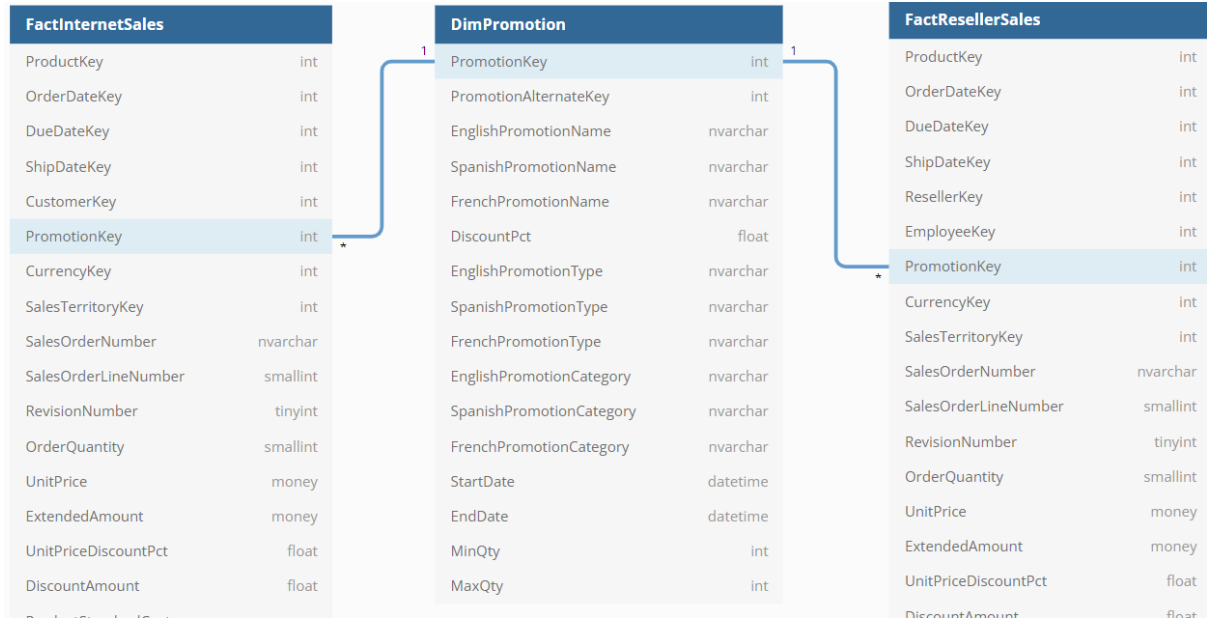
DimProductSubCategory

table_name	column_name	data_type
DimProduct	ProductSubcategoryKey	int
DimProductSubcategory	ProductSubcategoryKey	int



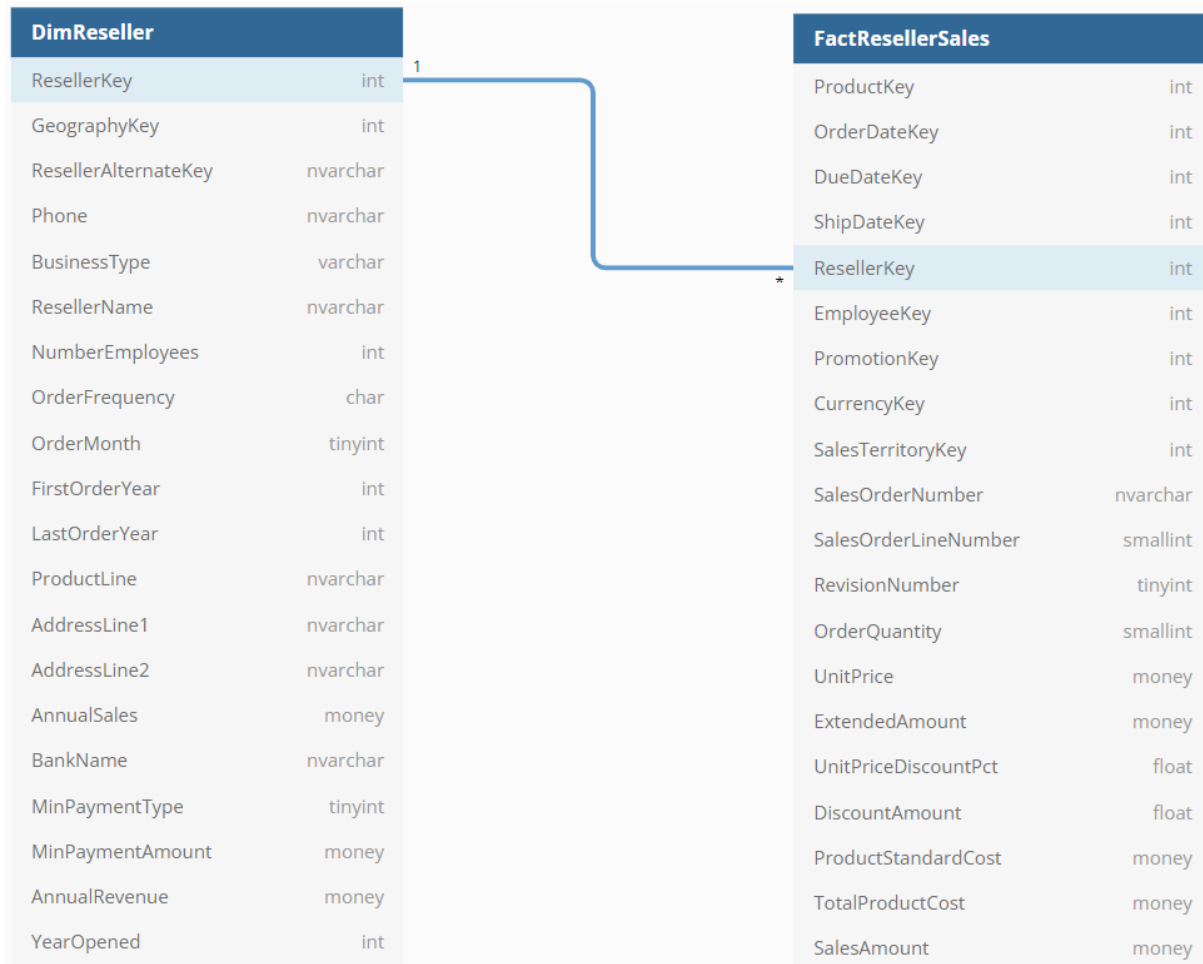
DimPromotion

table_name	column_name	data_type
DimPromotion	PromotionKey	int
FactInternetSales	PromotionKey	int
FactResellerSales	PromotionKey	int
FactSales	PromotionKey	int



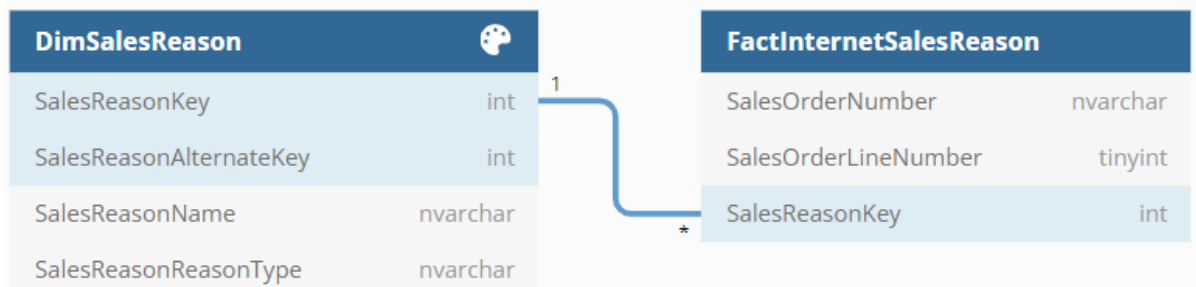
DimReseller

table_name	column_name	data_type
DimReseller	ResellerKey	int
FactResellerSales	ResellerKey	int



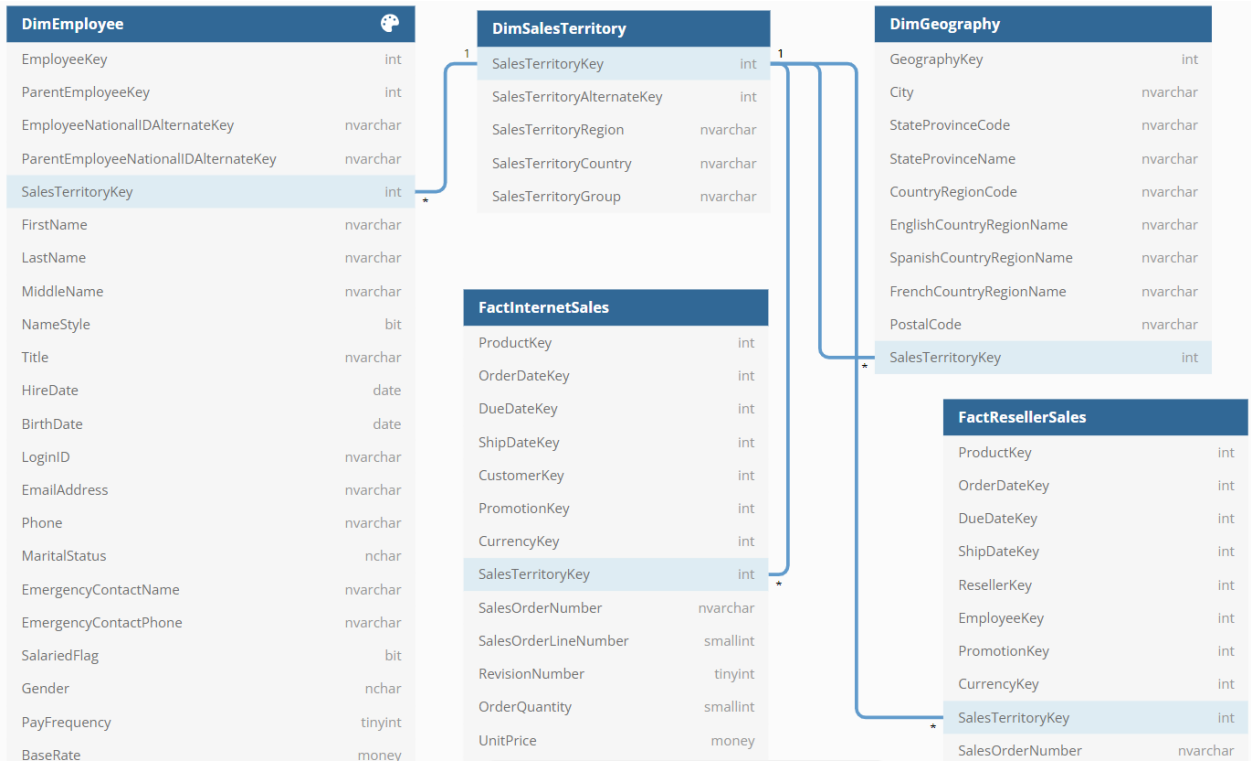
DimSalesReason

table_name	column_name	data_type
FactInternetSalesReason	SalesReasonKey	int
DimSalesReason	SalesReasonKey	int



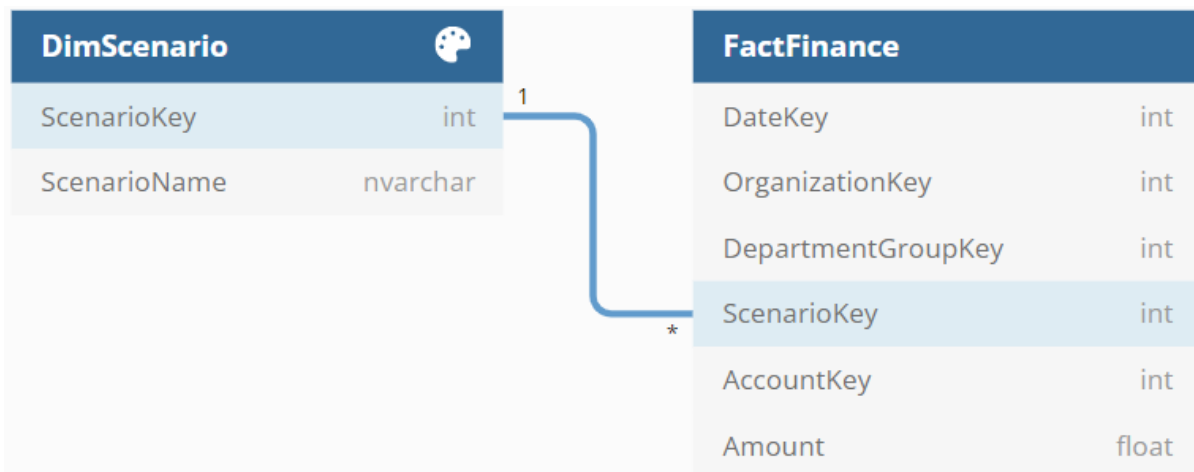
DimSalesTerritory

DimSalesTerritory	SalesTerritoryKey	int
FactInternetSales	SalesTerritoryKey	int
FactResellerSales	SalesTerritoryKey	int
DimEmployee	SalesTerritoryKey	int
DimGeography	SalesTerritoryKey	int



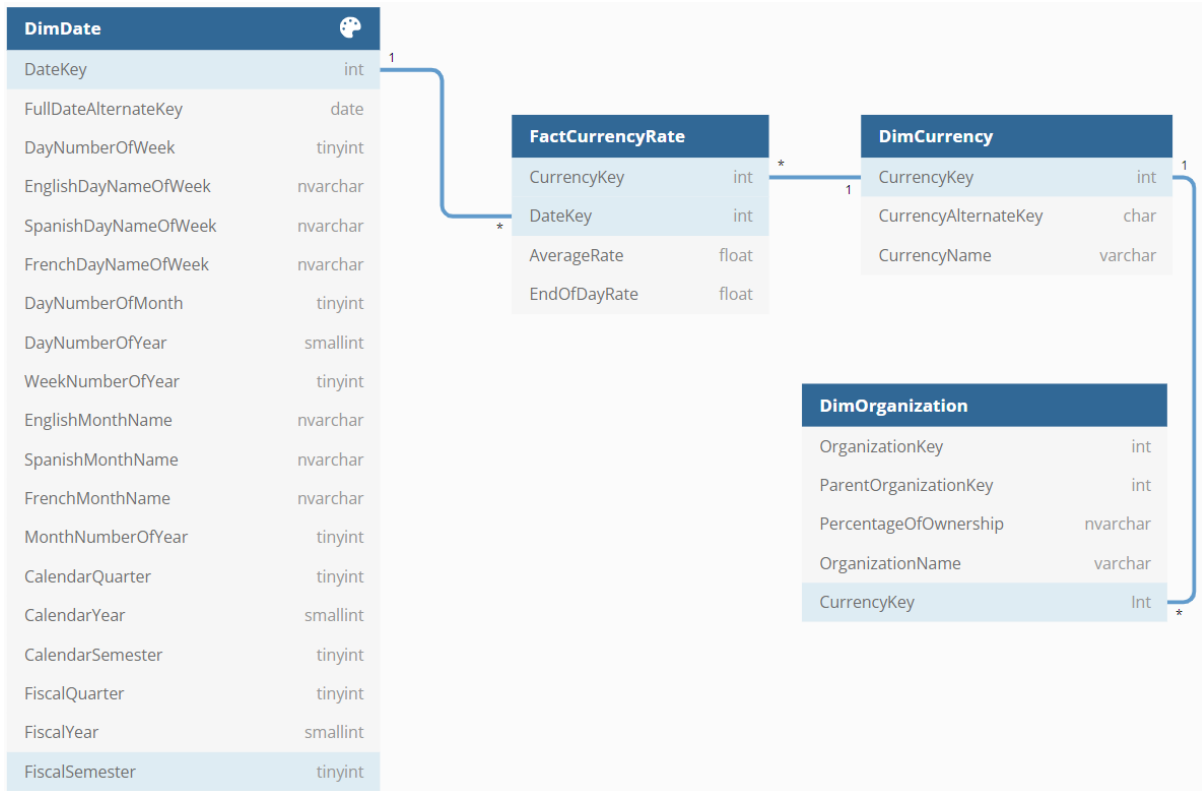
DimScenario

table_name	column_name	data_type
DimScenario	ScenarioKey	int
FactFinance	ScenarioKey	int

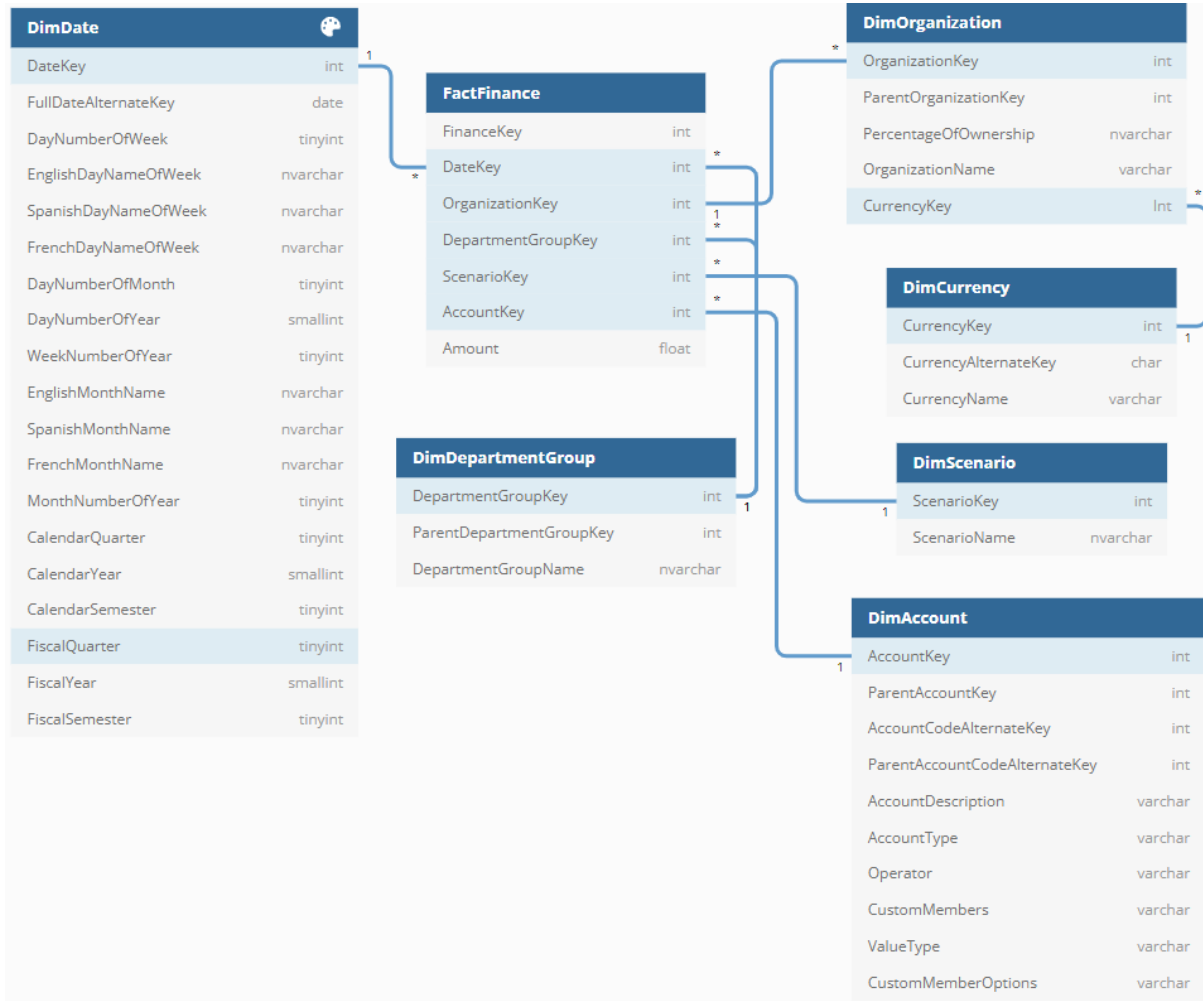


B: Fact tables - Dependencies:

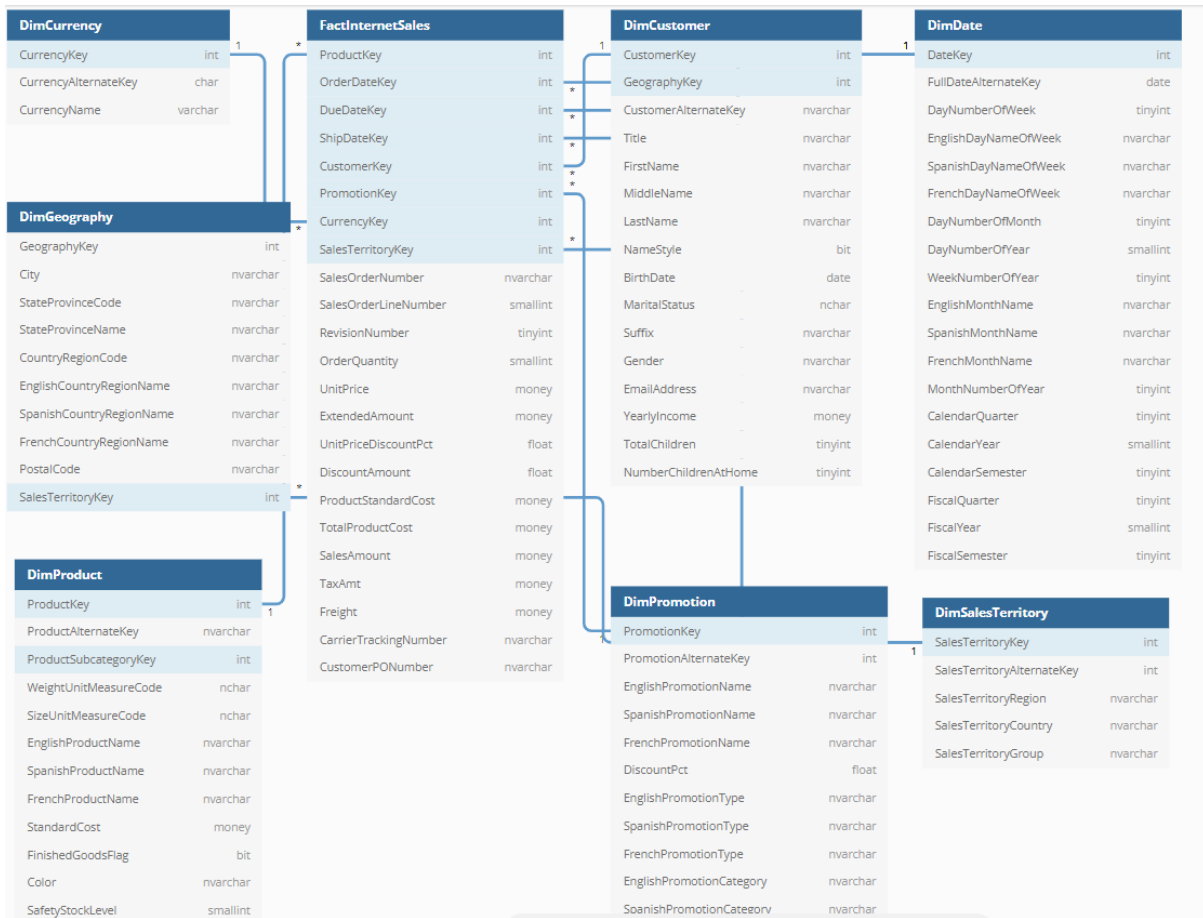
FactCurrencyRate



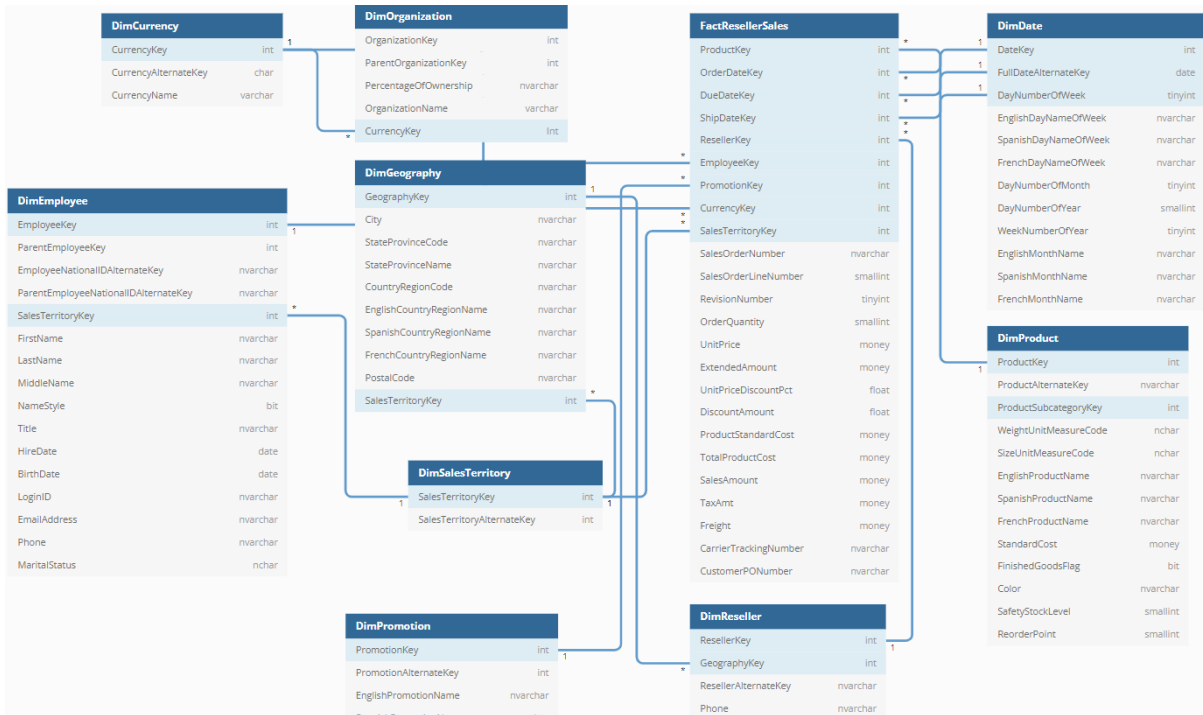
FactFinance



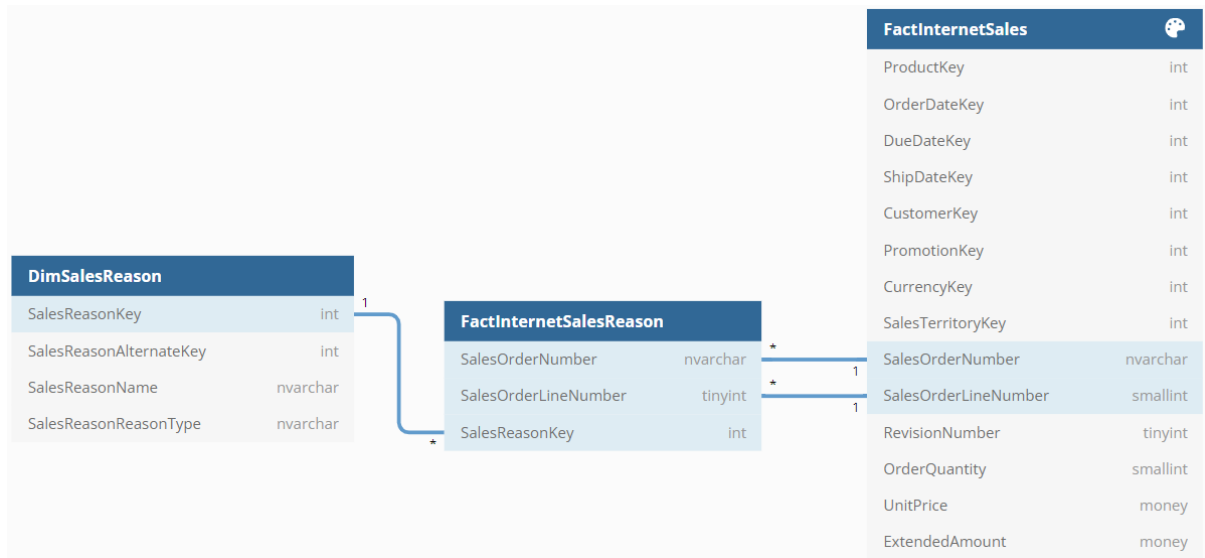
FactInternetSales



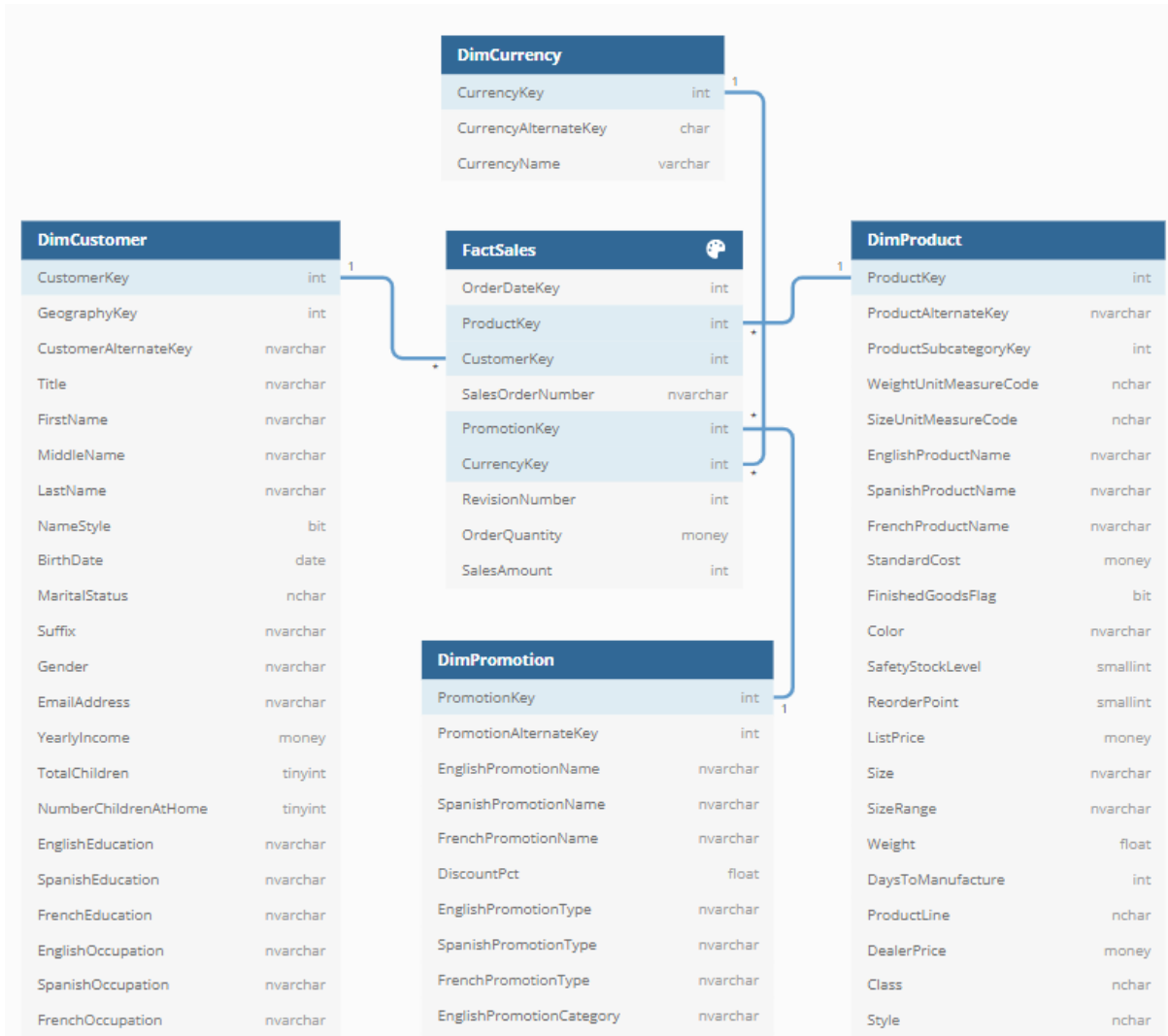
FactResellerSales



FactInternetSalesReason



FactSales



Complete Diagram

